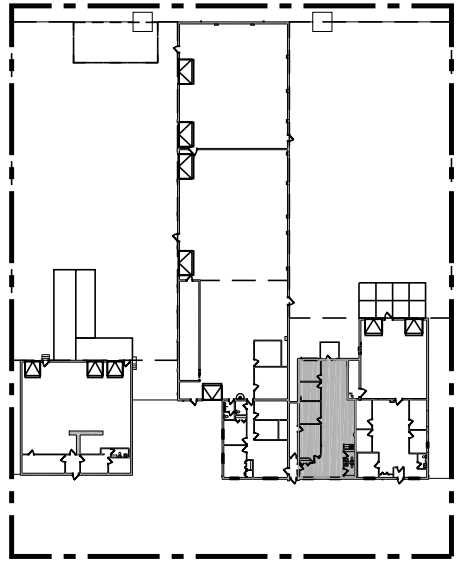


PROJECT #: -
DATE: 3/12/09

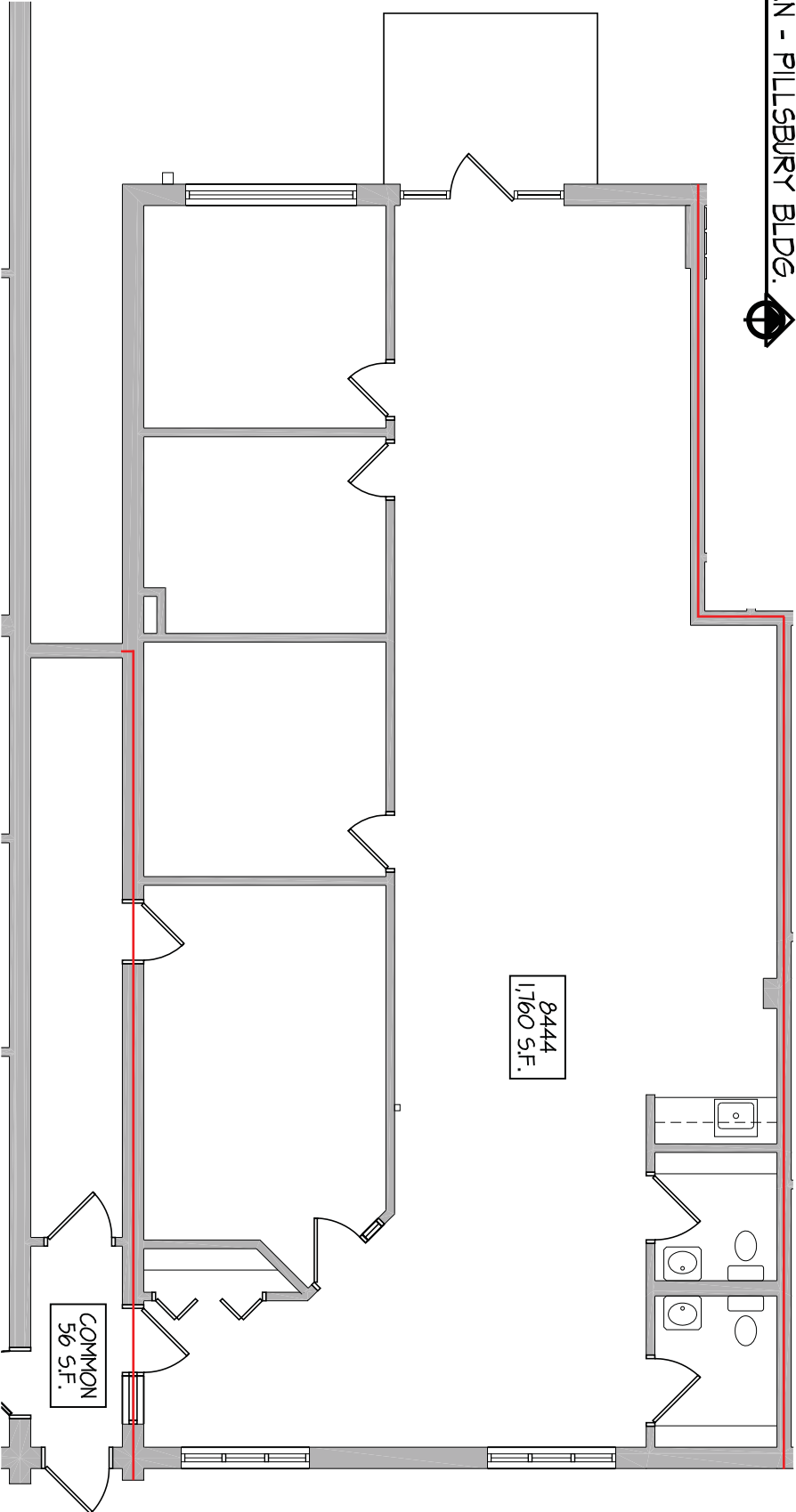
PILLSBURY BUILDING
8448 PILLSBURY AVE. S
BLOOMINGTON, MN.

KENDALL
COMMERCIAL
PHONE 952.884.4888
FAX 952.884.4885

9300 Hennepin Town Road
Eden Prairie, MN. 55347
Tel: 952.278.8880
Fax: 952.278.8822



KEY PLAN - PILLSBURY BLDG.
NOT TO SCALE



8444
1,160 S.F.

COMMON
56 S.F.

ENLARGED 8444 PILLSBURY PLAN
1/8" = 1'-0"

